

Syndecan-1 is a member of the family of transmembrane heparan sulphate proteoglycans expressed on the surface of mature plasma cells and some epithelial cells where it mediates cellular adhesion and facilitates basic Fibroblast Growth Factor (bFGF) action by permitting dimerization of the bFGF signal transmitters.

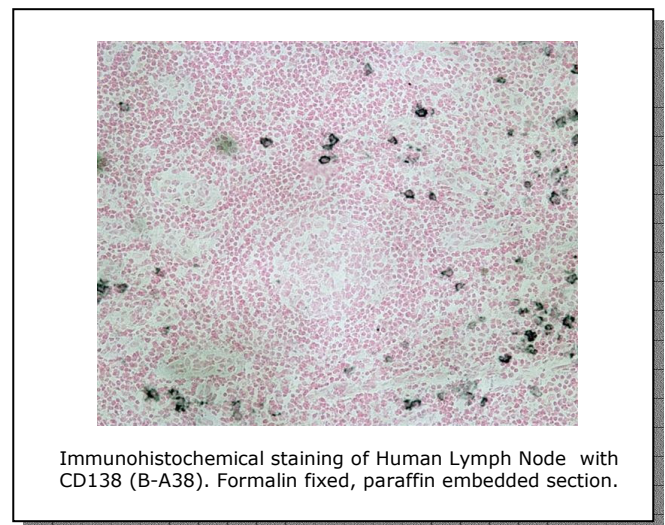
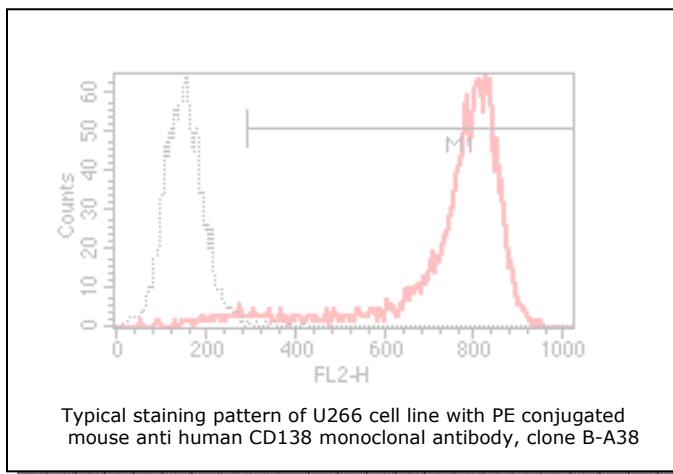
The CD138 antigen is expressed during normal B-Lymphocyte differentiation on pre-B cells and plasma cells, but not in peripheral blood, bone marrow or tonsil cells.

The antibody B-A38 raised against the CD138 antigen was developed by DIACLONE, France.

CD138 specifically identifies human plasma cells. It strongly reacts with all multiple myeloma cell lines and constitutes a suitable marker for human plasmocyte identification among hematopoietic cells and a very elegant tool for the diagnostic of hematological malignancies.

DIACLONE offers a wide variety of formats for this antibody: azide free for biological assays, conjugated to FITC, to R-PE and to biotin or unconjugated for flow cytometry, and pre-diluted for immunohistochemistry.

Monoclonal Antibodies to Human Syndecan-1



Clone	Host	Isotype	Format	Size	Cat N°	Application
B-A38	Mouse	IgG1	Purified	200 tests / 2 ml	854 073 020	FCM, IHC
			Azide free	200 µg / 200 µl	854 070 000	Bioassay
			FITC	100 tests / 1 ml	854 071 010	FCM
			PE	100 tests / 1 ml	854 072 010	FCM
			Biotin	100 tests / 1 ml	854 074 010	FCM
			Histology	50 tests / 2,5 ml	854 075 025	IHC

FCM: Flow cytometry IHC: Immunohistochemistry

References

- Wijdenes J. *et al.*, J. Biol. Regul. Homeost. Agents, 2002; 16:152-155.
- Orchard K.H. *et al.*, The 8th International Myeloma Workshop, Banff Canada, May 2001 – Poster.
- Jego G. *et al.*, Blood, 2001;97:1817-1822.
- Ragnarsson L. *et al.*, Cancer Immunol Immunother 2001;50(7):328-90.
- Odendahl M. *et al.*, J. Immunol., 2000;165:5970-5979.
- Seidel C. *et al.*, Blood, 2000;96:3139-3146
- Rousselot P. *et al.*, Cancer Res., 1999;59(5):1041-1048.
- Hjertner O. *et al.*, Blood,1999; 94:3883-3888.
- Gattei V, Godeas C, Degan M, Rossi FM, Aldinucci D, Pinto A. Characterization of Anti CD-138 monoclonal antibodies as tools for investigating the molecular polymorphism of syndecan-1 in human lymphoma cells. Br J Haematol. 1999;104:152-162.
- Thabard W. *et al.*, Clin. Cancer Res., 1999;5:2693-2697.
- Sahota S. *et al.*, Blood, 1998; 91:238-243.
- Dore J-M. *et al.*, FEBS Lett., 1998;426:67-70.
- Wijdenes J, Clément C, Klein B, Dore J-M. CD138 (syndecan-1) Workshop Panel report. In: Kishimoto T, Kikutani H, von dem Borne AEGK, *et al*, eds. Leucocyte Typing VI: White Cell Differentiation Antigens. New York, NY:Garland Publishing, Inc;1997:249-252.
- Barillé S. *et al.*, Blood, 1997;90:1649-1655.
- Sun R-X *et al.*, Journal of Immunological Methods, 1997;205:73-79.
- Jourdan M. *et al.*, British Journal of Haematology, 1997;100:637-646.
- Vooijs W. *et al.*, Review Book Multiple Myeloma, 1996.
- Wijdenes J, Vooijs WC, Clément C, *et al.* A plasmocyte selective monoclonal antibody (B-B4) recognizes syndecan-1. Br J Haematol. 1996;94:318-323.

Peptide mapping analysis of CD138 B-A38 and B-B4 clones has shown that both recognize the same amino acid. This is confirmed by identical behavior of both B-A38 and B-B4 in all known formats.

ELISA Kit to Human Syndecan-1

The Human sCD138 ELISA is to be used for the in-vitro quantitative determination of **soluble Syndecan-1 molecule (sCD138)** in human serum, plasma, buffered solutions or cell culture medium.

The sCD138 Kit is a solid phase sandwich Enzyme Linked-Immuno-Sorbent Assay (ELISA). A monoclonal antibody specific for sCD138 has been coated onto the wells of the microtiter strips provided. Samples, including standards of known sCD138 concentrations, specimens and unknowns are pipetted into these wells. During the first incubation, the sCD138 antigen and a biotinylated monoclonal antibody specific for CD138 are simultaneously incubated. After washing, the enzyme (streptavidin-peroxydase) is added. After incubation and washing to remove all the unbound enzyme, a substrate solution which is acting on the bound enzyme is added to induce a coloured reaction product. The intensity of this coloured product is directly proportional to the concentration of sCD138 present in the samples.

Samples	Sample size	Sensitivity	Range	Incubation	Size	Cat N°
Serum, Plasma, Cell supernatant	100 µl	2.56 ng / ml	8 ng / ml - 256 ng / ml	1H45	1 x 96 tests 2 x 96 tests	850 640 096 850 640 192

References

- Bruegger D. *et al.*, Am J. Physiol Heart Circ Physiol, 2005; 10.1152.
- Kyrtsolis M-C. *et al.*, Blood, 2004; 104: 4882.
- Joensuu H. *et al.*, Cancer Res., 2002; 62: 5833 – 5842.
- Seidel C. *et al.*, Blood, 2000; 95: 388 – 392.
- Seidel C. *Et al.*, Blood, 2000; 96: 3139 – 3146.